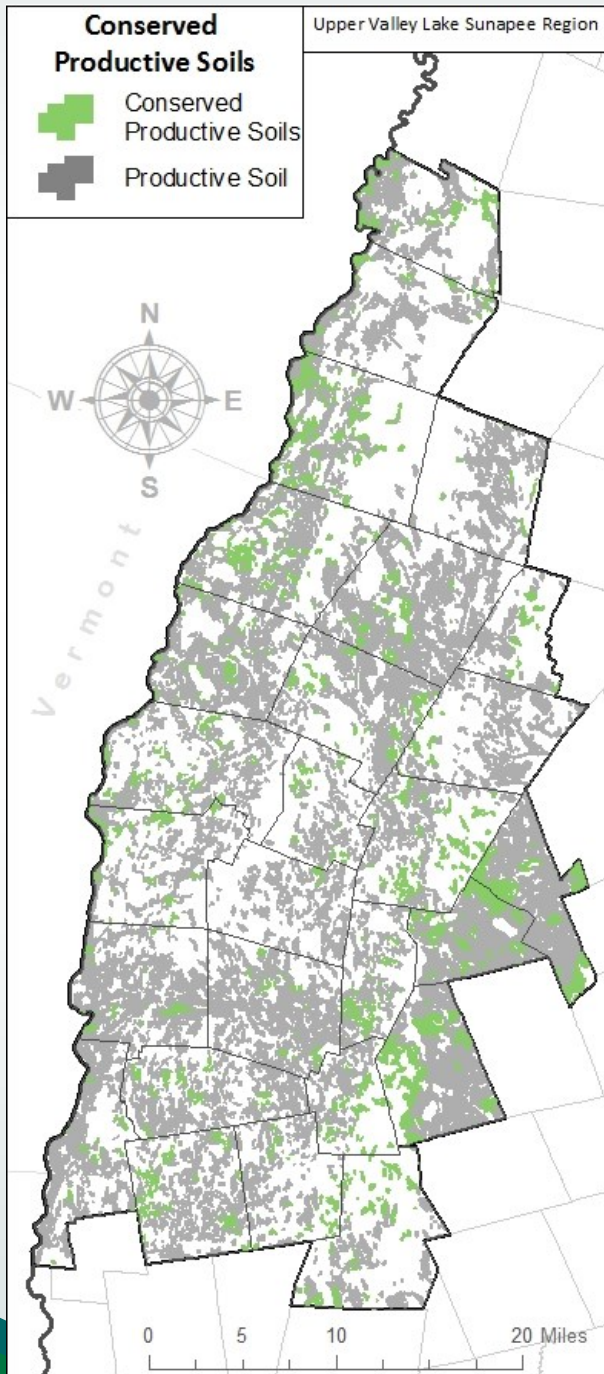




Your Regional Plan

Conserved Land with Productive Soils Environment



Metric:

Out of a total of 663,768 acres of land in the Upper Valley Lake Sunapee region, 209,064 acres (31.5%) of land is classified by the soil survey of 2009 as productive farmland. Of this area, 27,929 acres (13%) is under conservation.

Geography:

Upper Valley Lake Sunapee Regional Planning Commission region

Summary:

The category of productive farmland is defined by the Soil Survey Geographic database for New Hampshire as prime farmland, farmland of local importance, and farmland of statewide importance. This metric calculates the area of conserved land which fits this description.

Data Sources:

Soil Survey Geographic (SSURGO) database for New Hampshire

GRANIT Conservation and Protected Lands

GRANIT New Hampshire Political Boundaries

